



STOFFENKAART

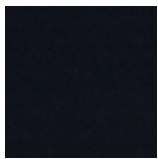
2020

STANDAARD STOFFEN
AFWIJKEND OP AANVRAAG

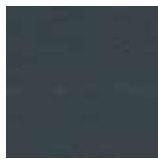
STOFFENKAART AKOESTIEK

100% gerecycled polyester!

Stofgroep 1 Standaard Camira Lucia & print



Havana
(YBo09)



Paseo
(YBo19)



Aruba
(YBo93)



Slip
(YBo94)



Bluebell
(YBo97)



Calypso
(YB106)



Print
(min. 300dpi)

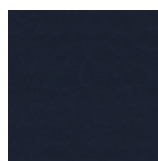
Stofgroep 2 Overig Camira Lucia + Carlow | 10% meerprijs



Martinique
(YBo04)



Montserrat
(YBo11)



Costa
(YBo26)



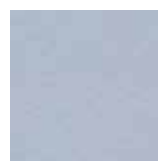
Tequila
(YBo38)



Sombrero
(YBo46)



Windjammer
(YBo47)



Rum
(YBo86)



Lobster
(YBo87)



Solano
(YBo88)



Scuba
(YBo89)



Tarot
(YBo90)



Curacao
(YBo95)



Apple
(YBo96)



Ocean
(YB100)



Bridgetown
(YB102)



Belize
(YB105)



Oyster
(YB107)



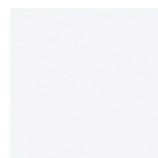
Blizzard
(YB108)



Madura
(YB156)



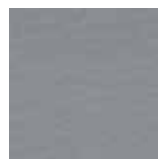
Marianna
(YB157)



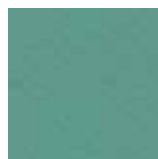
Adobo
(YB165)



Tortuga
(YB168)



Buru
(YB170)



Campache
(YB301)



Sandstorm
(YB302)



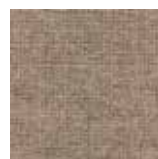
Tallow
(CLW01)



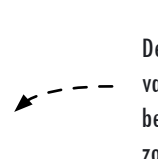
Ballina
(CLW02)



Roundwood
(CLW03)



Quin
(CLW04)



Convoy
(CLW09)



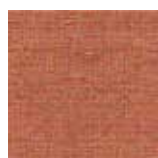
Ardee
(CLW10)



Wicklow
(CLW11)



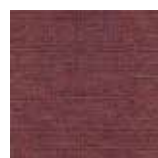
Callan
(CLW05)



Navan
(CLW06)



Dublin
(CLW07)



Redcross
(CLW08)



Convoy
(CLW09)



Ardee
(CLW10)

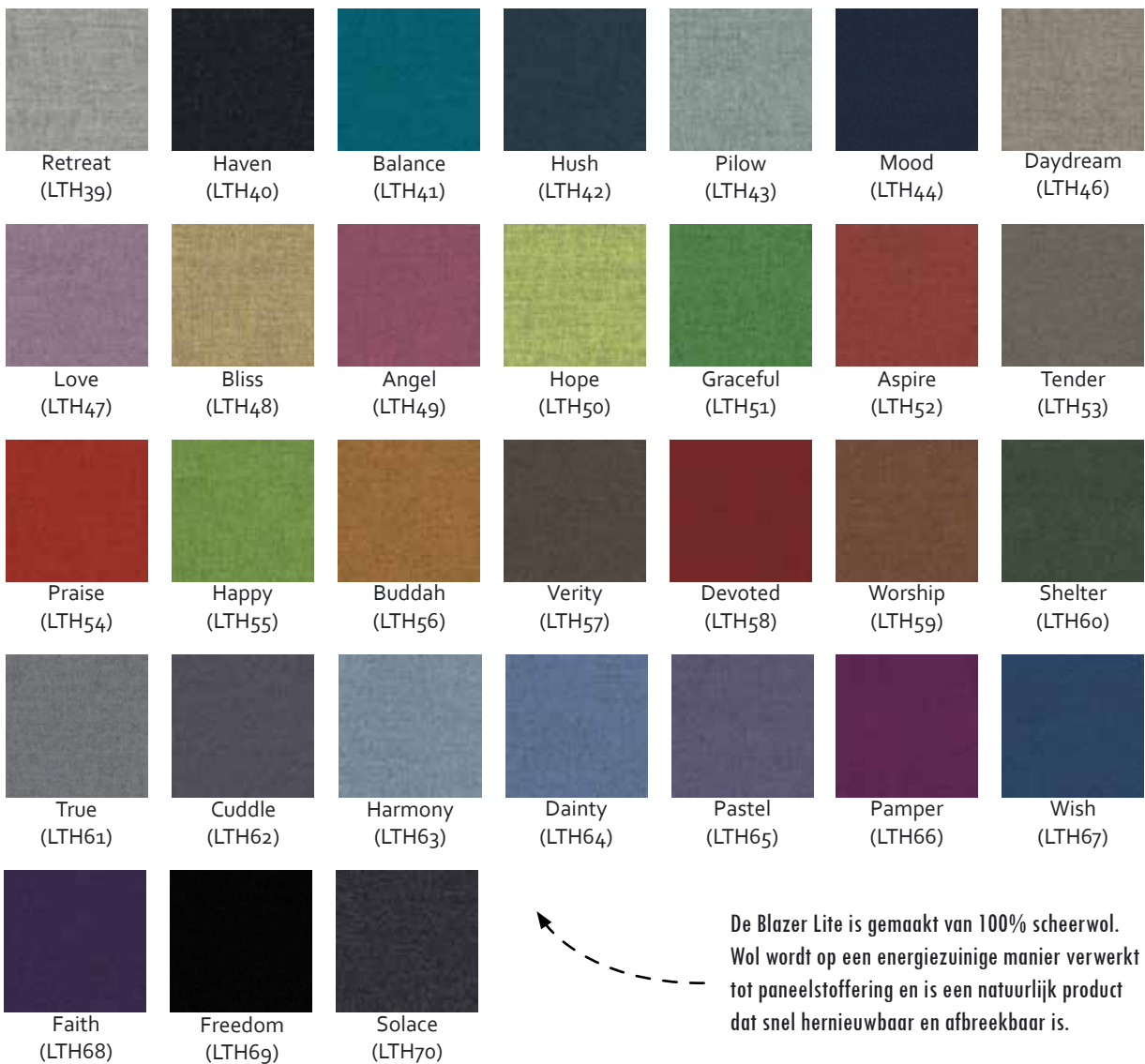


Wicklow
(CLW11)

De Carlow is de nieuwe paneelstofferings van Camira. Deze gemêleerde stoffering bestaat uit meerdere kleuren garen wat zorgt voor een luxe eigentijdse uitstraling.



Stofgroep 3 Camira Blazer Lite | 30% meerprijs



* Overige kleuren en stofferingen zijn op aanvraag mogelijk.

SPECIFICATIONS

Camira Lucia

Composition:	100% Recycled Polyester Non metallic dyestuffs
Width:	170cm
Weight:	260 g/m2
Rubbing fastness – Dry:	4
Rubbing fastness – Wet:	4
Flammability:	BS EN 1021 - 1:2006 (cigarette) BS EN 1021 - 2:2006 (match) BS 7176:2007 Low Hazard BS 476 Part 7 Class 1
Light fastness	6
Cleaning	Vacuum regularly. Wipe clean with a damp cloth or shampoo using proprietary upholstery shampoo.

Printed Decotex

Composition:	100% Polyester Non metallic dyestuffs
Width:	315cm
Weight:	215 g/m2
Rubbing fastness – Dry:	4
Rubbing fastness – Wet:	4
Flammability:	EN13501 B1 for 4102, Class 1
Light fastness	6
Cleaning	Vacuum regularly. Wipe clean with a damp cloth or shampoo using proprietary upholstery shampoo.

Camira Carlow

Composition:	100% Recycled Polypropylene
Width:	170cm
Weight:	214 g/m2
Rubbing fastness – Dry:	4
Rubbing fastness – Wet:	4
Flammability:	EN1021-1 (cigarette) EN13501-1 adhered class b, s1, do EN13501-1 un-adhered class c, s2, do
Light fastness	6
Cleaning	Vacuum regularly. Wipe clean with a damp cloth or shampoo using proprietary upholstery shampoo.

Camira Blazer Lite

Composition:	100% Virgin Wool Non metallic dyestuffs
Width:	170cm
Weight:	355 g/m2
Rubbing fastness – Dry:	4
Rubbing fastness – Wet:	4
Flammability:	BS476 part 7, class 1, part 6, class 0 EN13501-1 adhered class b, s1, do EN13501-1 adhered class b, s1, do EN13501-1 un-adhered class d, s2, do BS5867-2: type b
Light fastness	5
Cleaning	Vacuum regularly. Professionally dry clean or wipe clean with a damp cloth.

Nyink B.V.

Mors 13
7151 MX Eibergen
Nederland

T +31(0)54 - 470 02 04
E info@nyink.nl
W www.nyink.nl

Disclaimer: Dit document is met de grootst mogelijke zorg samengesteld. Niets uit deze uitgave mag zonder uitdrukkelijke, schriftelijke toestemming van Nyink B.V. worden overgenomen of vermenigvuldigd. Nyink B.V. is niet aansprakelijk voor eventuele onjuistheden of gevolgen van gebruik of misbruik van de informatie in dit document.